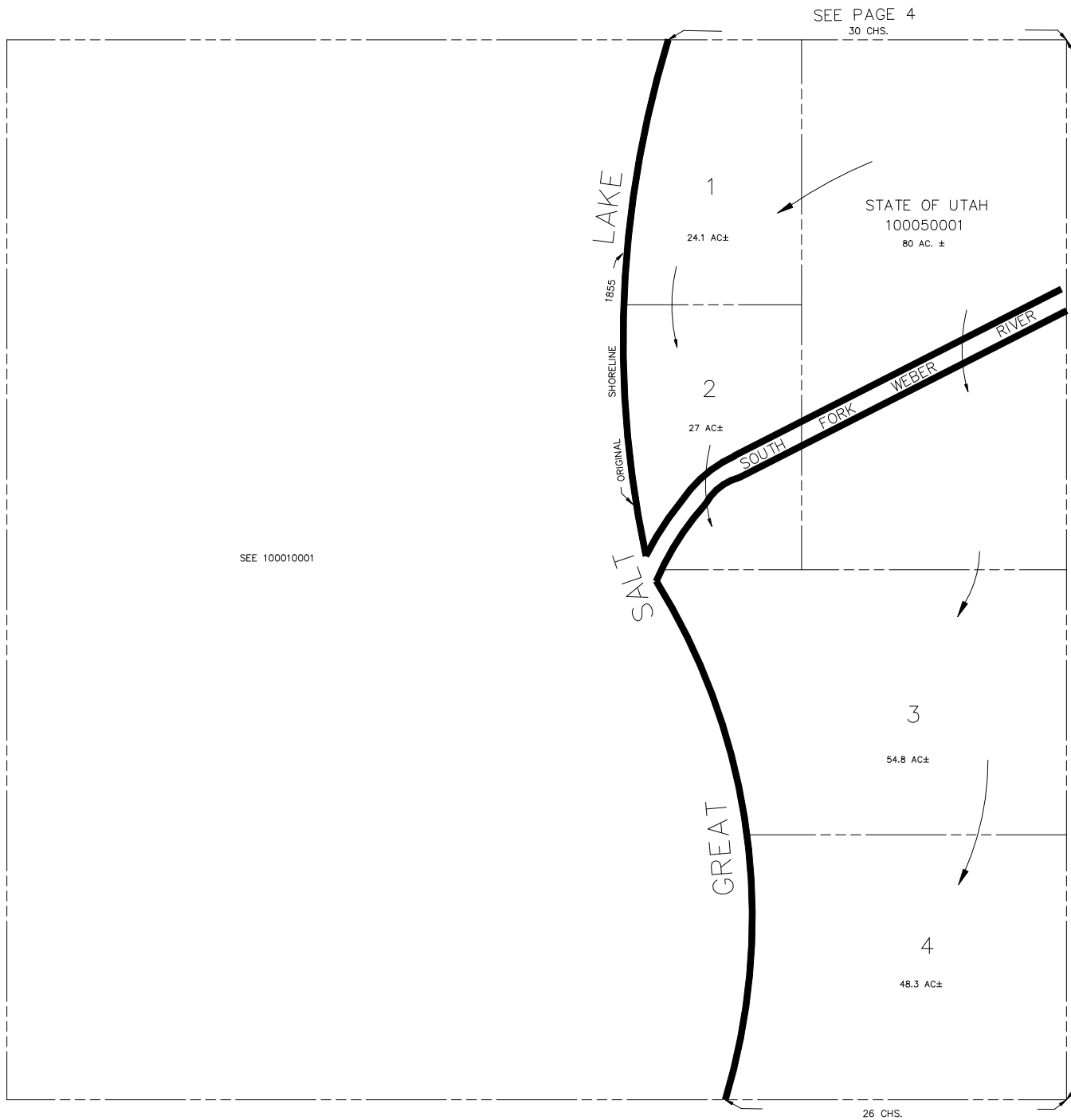


# SECTION 10, T.5N., R.3W., S.L.B.& M.

IN WEBER COUNTY

TAXING UNIT: 30

SCALE 1" = 400'



SEE PAGE 4  
30 CHS.

STATE OF UTAH  
100050001  
80 AC. ±

1  
24.1 AC±

1855

SHORELINE

ORIGINAL

SALT LAKE

GREAT

3  
54.8 AC±

4  
48.3 AC±

26 CHS.

SEE PAGE 20

80 CHS.

SEE PAGE 6

SEE 100010001